



NATIONAL MALARIA UPDATE

Dec 2003

Welcome to the 14th National Malaria Update.

This update serves to present the current trends in the national malaria cases and deaths for South Africa. The reported data is collected mainly from the malaria affected provinces in South Africa. It provides feedback to a range of persons involved in malaria control programmes. The figures presented are subject to modification as malaria affected provinces conduct follow-ups and verify the data.

Annual malaria notifications for South Africa

The annual notified malaria cases for South Africa for past 5 years, 1999-2003, are presented below. In 2000, South Africa experienced a malaria epidemic with 64 622 malaria cases having been reported. Following the epidemic from 2001, the number of reported malaria cases has steadily been decreasing. For the period, January 2003 – December 2003, 13 295 malaria cases and 116 malaria deaths were reported (Table 1). This represents a 15% decrease in the number of reported cases and a 21% increase in the number of reported malaria deaths in comparison to the same period in 2002 (Figure 1). The Limpopo Province notified 7017 malaria cases during 2003 (Table 1). This represents a 45% increase in comparison to the annual total for 2002. Malaria outbreaks were reported in the Limpopo Province during January and October 2003. Limpopo notified 90 malaria deaths for 2003. Mpumalanga notified 4 201 malaria cases representing a 47% decrease whilst KwaZulu-Natal notified 2 042 cases representing a 15% decrease, when the 2003 total annual malaria cases are compared to the 2002 total annual malaria cases for 2003 (Table 1).

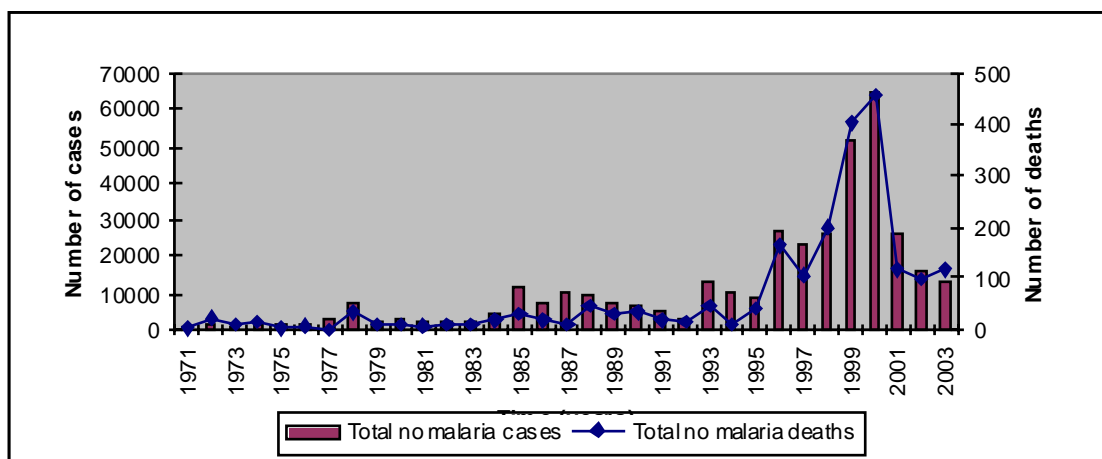


Figure 1: Annual malaria cases and deaths, 1970-2003, South Africa

Seasonal malaria notifications for South Africa

Malaria transmission in South Africa is seasonal and is therefore best presented graphically using seasonal data. The seasonal data (July – June) is outlined below. The malaria season starts in October and ends in May with malaria cases peaking between January to February. This trend is demonstrated in the figure 2 below. The 2002/2003 malaria transmission pattern closely follows that of the two previous seasons except during the month of October. For the past three seasons, an annual decrease in the transmission of malaria cases has occurred. For the 2002/2003 season, 10 989 malaria cases were reported, representing a 72% decrease in comparison to the 2001/2002 season. Several factors may have contributed towards this decrease which include: use of combination drug therapy in two of the three malaria affected areas which reduces gametocyte carriage within the population, use of effective insecticides for indoor residual house spraying, collaborative malaria control efforts with neighbouring countries such as Mozambique and Swaziland and a below average annual rainfall.

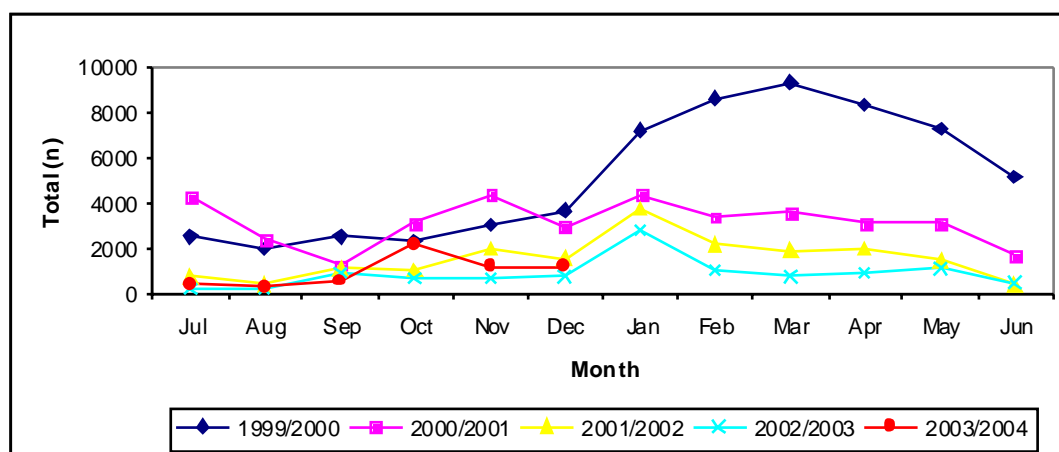


Figure 2: Malaria cases by season, by month, South Africa, 1999-2003

Limpopo

For the period December 2003, 968 malaria cases and 11 malaria deaths were notified. Following the malaria outbreak in October, the notified malaria cases and deaths have been decreasing. Mopani (263), Vhembe (574) and Bohlabela (108) district municipalities notified the majority of malaria cases. Malaria deaths were reported from Dzanani (2), Lulekani (1), Malamulele (1), Mhala (2), Thoyoyandou (4) and Vuvani (1).

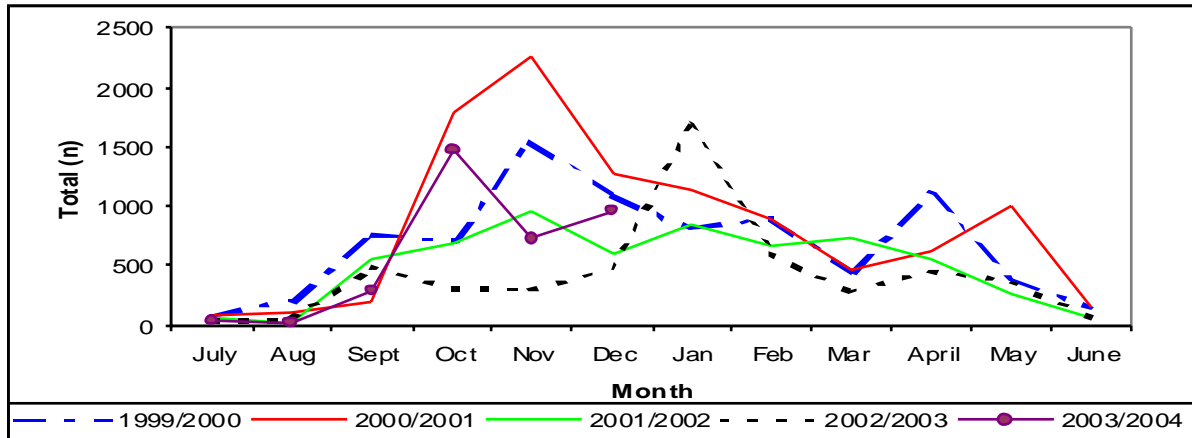


Figure 3: Reported malaria cases as per malaria season, Limpopo, 1999-2004

Mpumalanga

For the period December 2003, 183 malaria cases and no malaria deaths were reported. A 8% decrease in the number of reported cases occurred in comparison to the same period in 2002. Tonga and Shongwe municipalities together accounted for 93% of the malaria cases notified for July. The remaining cases were reported from the Barbeton (1), Kabokweni (7), Nelspruit (4) and Lydenburg (1) municipalities.

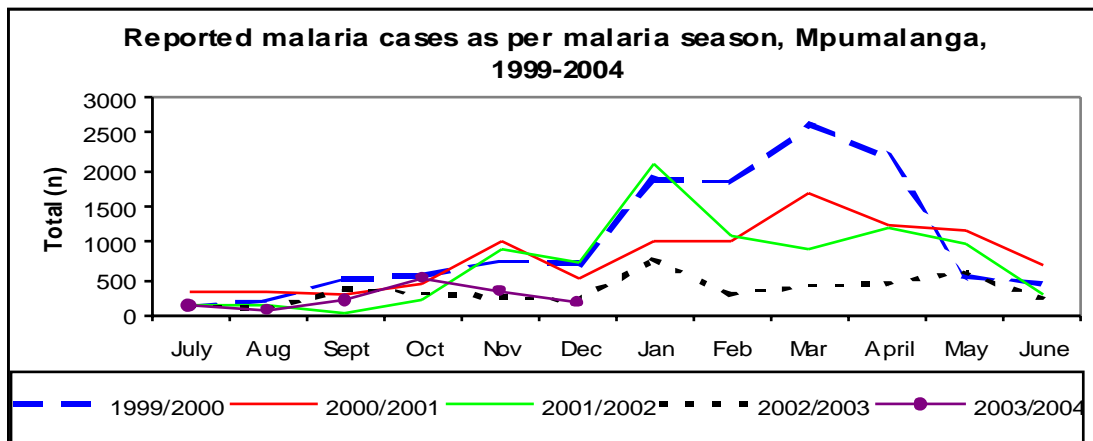


Figure 4: Reported malaria cases as per malaria season, Mpumalanga, 1999-2004

KwaZulu-Natal

For December 2003, 92 malaria cases and two deaths were reported. There has been a 13% decrease in the number of reported cases in comparison to the same period 2002. Ingwavuma notification district accounted for 60% of the malaria cases notified for December. The malaria deaths were notified from Ubombo and Pongola districts.

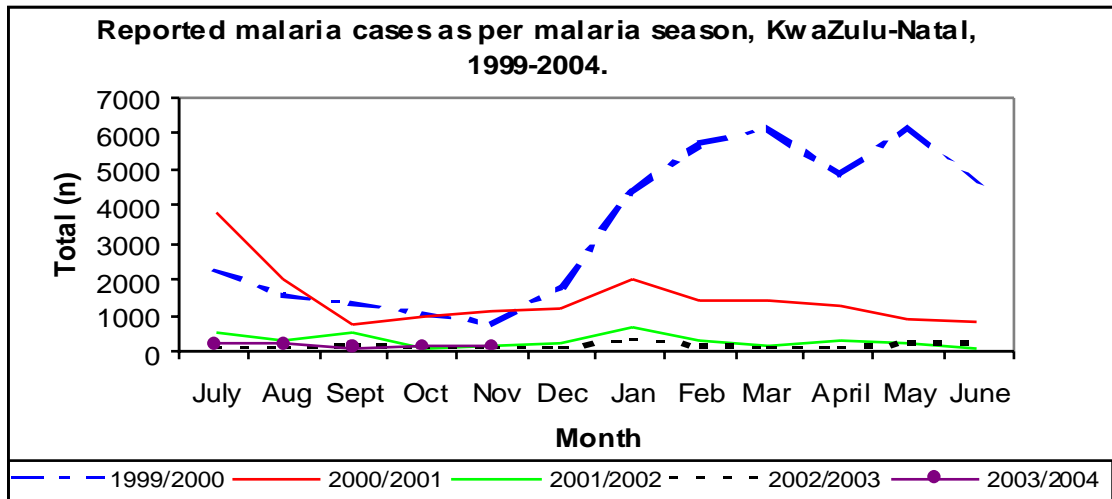


Figure 5: Reported malaria cases as per malaria season, KwaZulu-Natal, 1999-2004

Compiled by the National Malaria Control Programme, National Department of Health, with the assistance of the Provincial Malaria Control Programme Managers. Please contact Ms Johnson for any enquiries at tel no: (012) 312-0046 or e-mail: johnsc@health.gov.za

Table 1: Malaria cases in South Africa, 2000-2003

MALARIA CASES IN SOUTH AFRICA DURING 2001/2002 SEASON																											
MONTH	Jul		Aug		Sep		Oct		Nov		Dec		Jan		Feb		Mar		Apr		May		Jun		Total	Total	CF
PROVINCE	C	D	C	D	C	D	C	D	C	D	C	D	C	D	C	D	C	D	C	D	C	D	C	D	Cases	Deaths	
Limpopo	59	1	33	0	549	5	706	5	948	13	606	4	852	6	676	3	745	8	546	2	273	3	75	0	6068	50	0.8
Mpumalanga	164	0	143	0	40	0	235	0	907	0	722	0	2078	9	1109	4	922	4	1222	2	988	4	289	1	8819	24	0.3
KwaZulu-Natal	508	4	271	0	536	0	106	2	163	0	207	3	638	5	273	6	187	0	253	1	244	2	107	1	3493	24	0.7
Rest of SA	19	0	24	0	29	0	14	0	16	0	20	0	235	5	136	0	38	2	29	0	12	0	2	0	574	7	1.2
TOTAL	750	4	471	0	1154	5	1061	7	2034	0	1555	7	3803	25	2194	13	1892	14	2050	5	1517	9	473	2	18954	91	0.5
*CASES ** DEATHS																											
MALARIA CASES IN SOUTH AFRICA DURING 2002/2003 SEASON																											
MONTH	Jul		Aug		Sep		Oct		Nov		Dec		Jan		Feb		Mar		Apr		May		Jun		Total	Total	CF
PROVINCE	C	D	C	D	C	D	C	D	C	D	C	D	C	D	C	D	C	D	C	D	C	D	C	D	Cases	Deaths	
Limpopo	41	1	46	0	495	13	310	1	299	6	478	1	1685	23	604	8	279	1	462	1	367	2	69	0	5135	57	1.1
Mpumalanga	126	0	102	1	359	0	313	1	258	1	198	2	777	1	294	0	418	2	437	3	596	2	220	0	4098	13	0.4
KwaZulu-Natal	93	0	105	0	138	0	96	0	107	1	104	0	322	0	154	0	94	1	95	0	196	0	205	0	1709	2	0.1
Rest of SA	8	0	2	0	2	0	0	0	1	0	1	0	10	0	16	0	2	0	4	0	0	0	1	0	47	0	NA
TOTAL	268	1	255	1	994	13	719	2	665	8	781	3	2794	24	1068	8	793	4	998	4	1159	4	495	0	10989	72	0.7
MALARIA CASES IN SOUTH AFRICA DURING 2003/2004 SEASON																											
MONTH	Jul		Aug		Sep		Oct		Nov		Dec		Jan		Feb		Mar		Apr		May		Jun		Total	Total	CF
PROVINCE	C	D	C	D	C	D	C	D	C	D	C	D	C	D	C	D	C	D	C	D	C	D	C	D	Cases	Deaths	
Limpopo	45	0	36	0	294	1	1473	33	735	10	968	11													3551	55	1.5
Mpumalanga	127	0	70	0	208	2	527	8	344	5	183	0													1459	15	1
KwaZulu-Natal	225	0	226	0	122	0	164	0	147	0	92	2													976	2	0.2
Rest of SA	2	0																							2	0	NA
TOTAL	399	0	332	0	624	3	2164	41	1226	15	1243	13													5988	72	1.2

MALARIA CASES IN SOUTH AFRICA DURING 2000																											
MONTH	Jan		Feb		Mar		Apr		May		Jun		Jul		Aug		Sep		Oct		Nov		Dec		Total	Total	CF(%)*
PROVINCE	C*	D*	C	D	C	D	C	D	C	D	C	D	C	D	C	D	C	D	C	D	C	D	C	D	Cases	Deaths	
Limpopo	818	2	888	3	455	12	1085	4	386	1	147	0	96	0	120	1	207	4	1786	13	2241	13	1258	15	9487	68	0.7
Mpumalanga	1855	15	1825	13	2640	14	2184	2	537	1	452	0	327	0	322	0	278	0	444	1	998	0	528	0	12390	45	0.4
KwaZulu-Natal	4350	30	5759	42	6161	58	4926	64	6225	41	4553	21	3824	14	1987	19	763	12	937	15	1127	18	1174	6	41786	340	0.8
Rest of SA	142	2	103	2	86	0	176	1	153	0	63	0	32	0	22	0	58	0	30	0	51	0	43	0	959	5	0.5
TOTAL	7165	49	8575	60	9342	84	8371	71	7301	43	5215	21	4279	14	2451	20	1306	16	3197	29	4417	31	3003	21	64622	468	0.7
MALARIA CASES IN SOUTH AFRICA DURING 2001																											
MONTH	Jan		Feb		Mar		Apr		May		Jun		Jul		Aug		Sep		Oct		Nov		Dec		Total	Total	CF
PROVINCE	C	D	C	D	C	D	C	D	C	D	C	D	C	D	C	D	C	D	C	D	C	D	C	D	Cases	Deaths	
Limpopo	1144	8	888	6	455	2	622	5	1019	9	168	3	59	1	33	0	549	5	706	5	948	13	606	4	7197	61	0.8
Mpumalanga	1039	2	1017	1	1688	0	1251	3	1151	0	704	0	164	0	143	0	40	0	235	0	907	0	722	0	9061	6	0.1
KwaZulu-Natal	1962	7	1411	4	1380	4	1245	7	864	9	820	7	508	4	271	0	536	0	106	2	163	0	207	3	9473	47	0.5
Rest of SA	209	1	126	0	101	0	54	0	128	1	35	3	19	0	24	0	29	0	14	0	16	0	20	0	775	5	0.6
TOTAL	4354	18	3442	11	3624	6	3172	15	3162	19	1727	10	750	4	471	0	1154	5	1061	7	2034	13	1555	7	26506	119	0.4
MALARIA CASES IN SOUTH AFRICA DURING 2002																											
MONTH	Jan		Feb		Mar		Apr		May		Jun		Jul		Aug		Sep		Oct		Nov		Dec		Total	Total	CF
PROVINCE	C	D	C	D	C	D	C	D	C	D	C	D	C	D	C	D	C	D	C	D	C	D	C	D	Cases	Deaths	
Limpopo	852	6	676	3	745	8	546	2	273	3	75	0	41	1	46	0	495	13	310	1	299	6	478	1	4836	44	0.9
Mpumalanga	2078	9	1109	4	922	4	1222	2	989	4	289	1	126	0	102	1	359	0	313	1	258	1	198	2	7965	29	0.4
KwaZulu-Natal	638	5	273	6	187	0	253	1	244	2	107	1	93	0	105	0	138	0	96	0	107	1	104	0	2345	16	0.7
Rest of SA	235	5	136	0	36	2	36	0	12	0	4	0	8	0	2	0	2	0	0	0	1	0	1	0	473	7	1.5
TOTAL	3803	25	2194	13	1890	14	2057	5	1518	9	475	2	268	1	255	1	994	13	719	2	665	8	781	3	15619	95	0.6
MALARIA CASES IN SOUTH AFRICA DURING 2003																											
MONTH	Jan		Feb		Mar		Apr		May		Jun		Jul		Aug		Sep		Oct		Nov		Dec		Total	Total	CF
PROVINCE	C	D	C	D	C	D	C	D	C	D	C	D	C	D	C	D	C	D	C	D	C	D	C	D	Cases	Deaths	
Limpopo	1685	23	604	8	279	1	462	1	367	2	69	0	45	0	36	0	294	1	1473	33	735	10	968	11	7017	90	1.3
Mpumalanga	777	1	294	0	418	2	437	3	596	2	220	0	127	0	70	0	208	2	527	8	344	5	183	0	4201	23	0.5
KwaZulu-Natal	322	0	154	0	94	1	95	0	196	0	205	0	225	0	226	0	122	0	164	0	147	0	92	2	2042	3	0.1
Rest of SA	10	0	16	0	2	0	4	0	0	0	1	0	2	0											35	0	N/A
TOTAL	2794	24	1068	8	793	4	998	4	1159	4	495	0	399	0	332	0	624	3	2164	41	1226	15	1243	13	13295	116	0.9
*CASES **DEATHS ***CASE FATALITY																											
SOURCE DEPARTMENT OF HEALTH																											

