

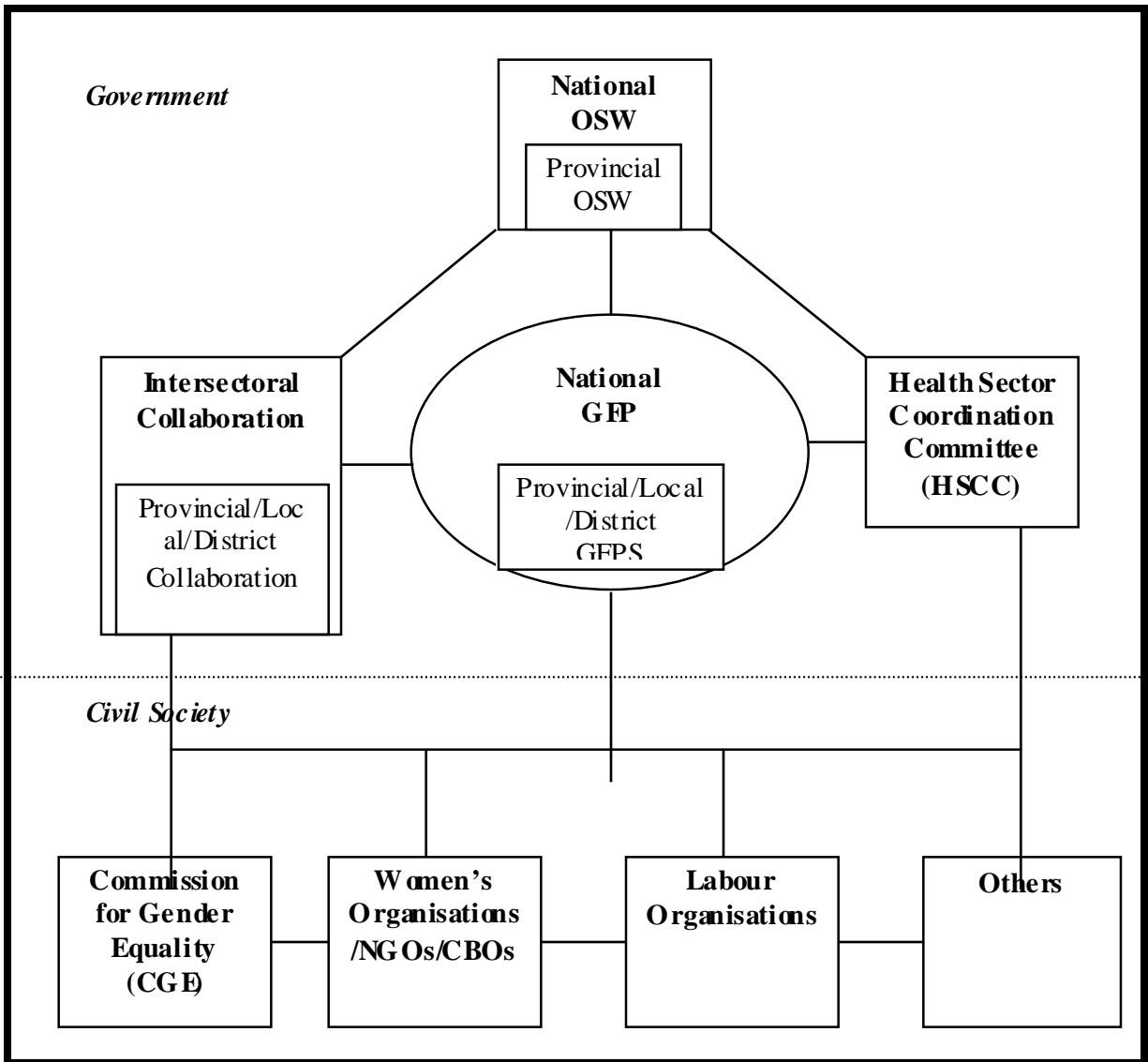
## APPENDIX

Figure 1: Proposed Intersectoral Co-ordination Framework†

<u>G.OVERNMENT</u>	<u>PARLIAMENT</u>	<u>INDEPENDENT BODIES</u>	<u>CIVIL SOCIETY</u>
THE PRESIDENCY	PORTFOLIO COMMITTEES Including THE PARLIAMENTARY COMMITTEE ON THE IMPROVEMENT OF THE QUALITY OF LIFE AND STATUS OF WOMEN	CONSTITUTIONAL COURT	NON- GOVERNMENTAL ORGANISATIONS
OFFICE ON THE STATUS OF WOMEN		THE OTHER COURTS	RELIGIOUS BODIES
PROVINCIAL OFFICES ON THE STATUS OF WOMEN	WOMEN'S CAUCUS	COMMISSION ON GENDER EQUALITY	CONTRALESA
GENDER UNITS IN LINE DEPARTMENTS	SECRETARIAT TO WOMEN'S CAUCUS	PUBLIC SERVICE COMMISSION	SALGA
GENDER UNITS IN LOCAL GOVERNMENT STRUCTURES	PARLIAMENTARY WOMEN'S GROUP	HUMAN RIGHTS COMMISSION	LABOUR ORGANISATIONS
	WOMEN'S EMPOWERMENT UNIT	SALAW COMMISSION	
	CABINET	PUBLIC PROTECTOR	
	DEPARTMENTS	LAND COMMISSION	
		TRUTH COMMISSION	
		YOUTH COMMISSION	
		INDEPENDENT ELECTORAL COMMISSION	

†Source: South African's National Policy Framework for Women's Empowerment and Gender Equality, 2000.

Figure 2: Internal Coordination



**Figure 3: External Coordination**

