

4

District Health Planning and Reporting

To avoid multiple planning, **each health district should produce one plan only**, and this should be the three-year plan required by Treasury. The plans for all the districts are then consolidated into the district health services element of a provincial three-year plan. These are rolling plans in that a new plan is made each year for a new three-year period.

To meet the requirements of other legislation mentioned above, the three-year district health plans must be compatible with the other types of plans. Firstly, they must be based partly on the broad strategic goals set out in the provincial five-year plans required under Public Service Regulations. Secondly, they must provide a basis for the municipal IDPs.

Both the district health plans and the provincial five-year plans must be based on ten-year provincial service platform plans, which set out the targets for the numbers, types and locations of hospitals and PHC facilities, as well as for staff and funding.

Treasury also requires the preparation of annual reports that inform stakeholders on the use of funds and on performance against the objectives stated in the plan. The annual reports will also provide information on health status and service delivery, and will serve as a basis for developing district health plans.

The relationships between district health plans and other plans and reports can be seen in Figure 1. The figure illustrates how provincial strategic position statements are used to develop ten-year provincial service platform plans. Those plans, together with the provincial five-year strategic goals and policies, annual reports and expected budgets, serve as a basis for developing the provincial, district and sub-district three-year health plans, including service platform and service delivery elements. The first year of the three-year health plans is used to prepare detailed annual operational plans. Sub-district and district health plans form the basis for the health section of local and district municipal IDPs.

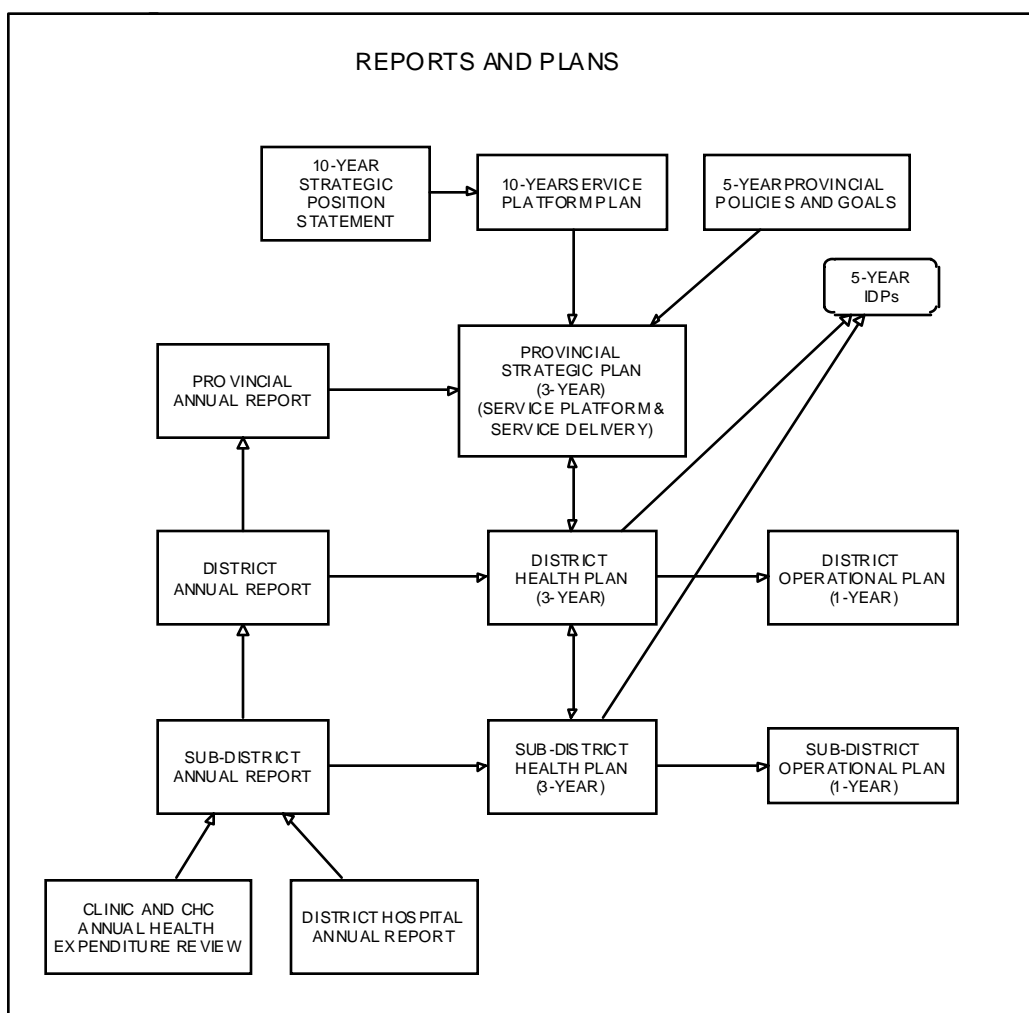


Figure 1. Relationships between annual reports and plans at different levels¹

¹ For simplicity, the diagram does not show provincial operational plans, clinic and community health centre (CHC) plans, and district hospital plans. The links with national plans are also not shown.